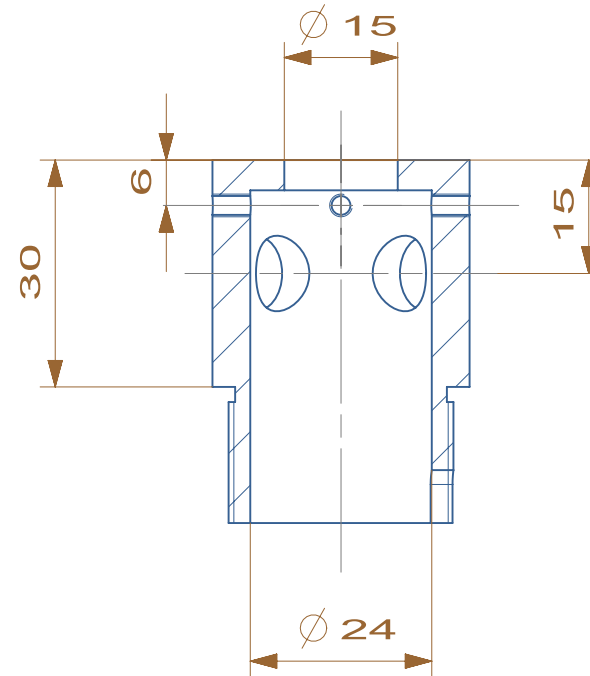
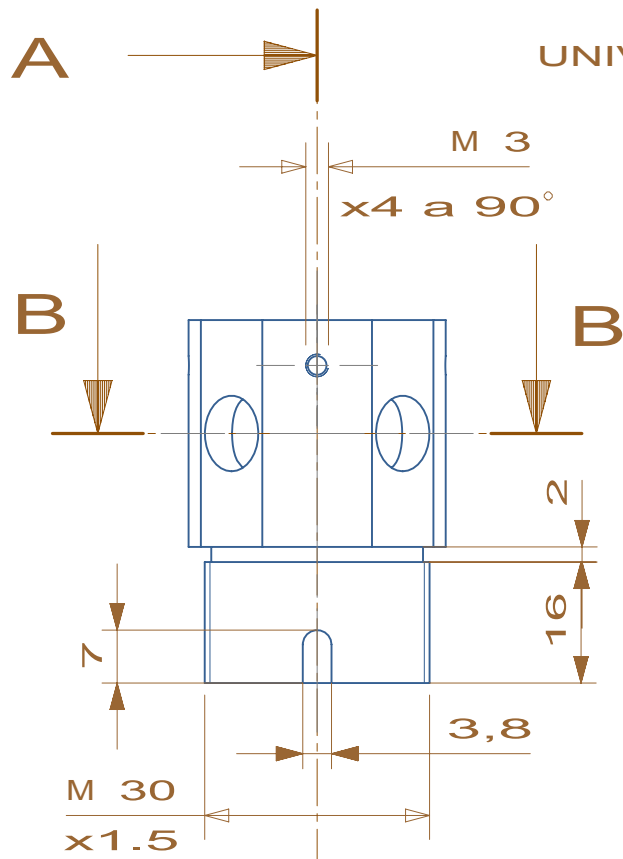


ZAFIROS EN OFICINA TECNICA.
(LA PARTE DE DIAM.SUP. SOBRESALE
0.5mm SOBRE LAS PIEZAS 6 Y 7)

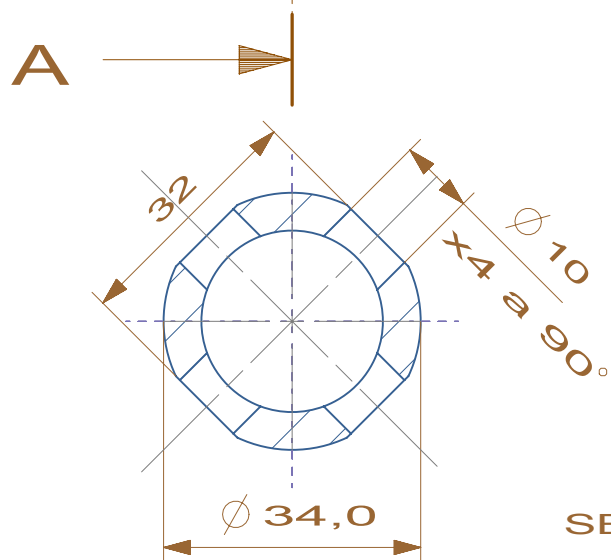


DETAIL K
SCALE 2:1

1 CONJUNTO

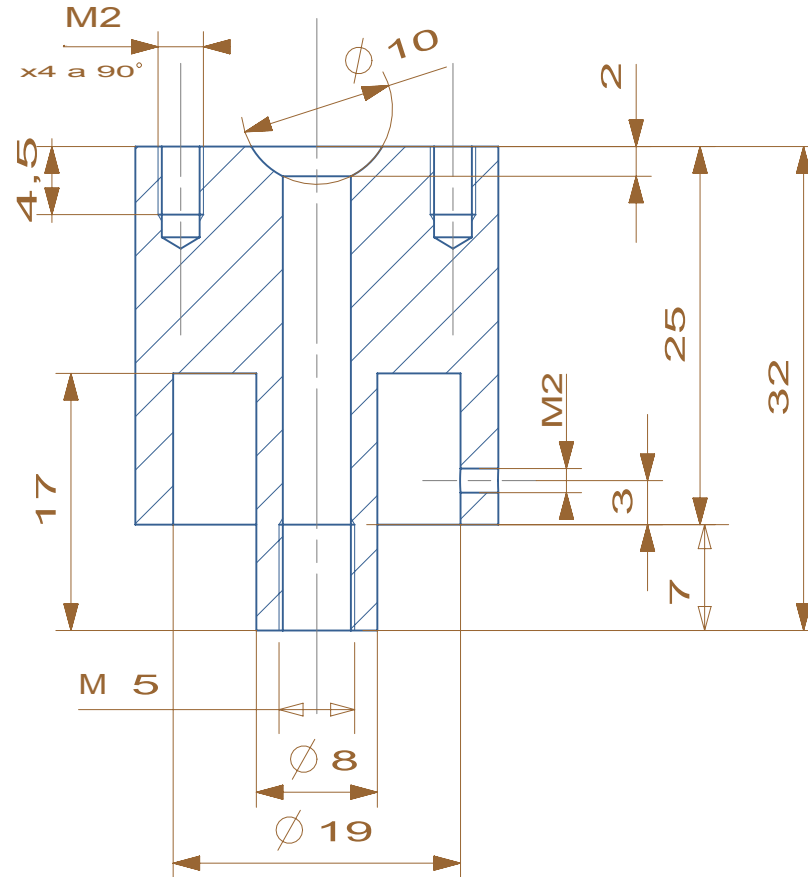


SECTION A-A

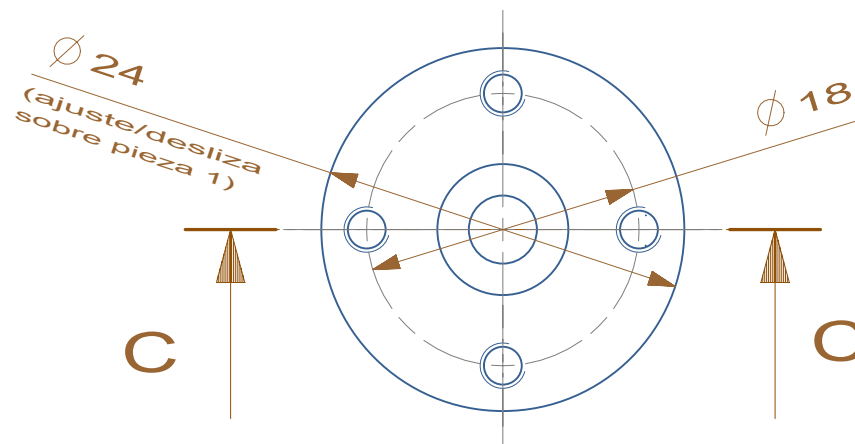


SECTION B-B

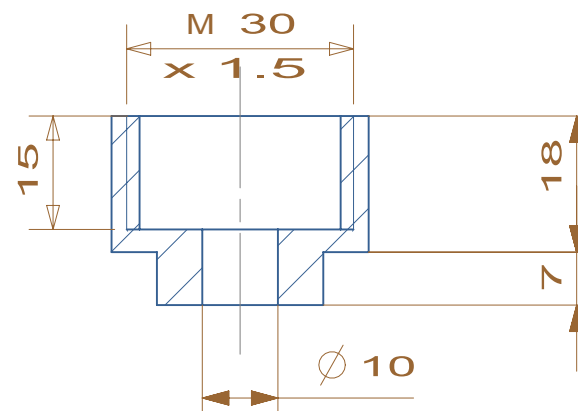
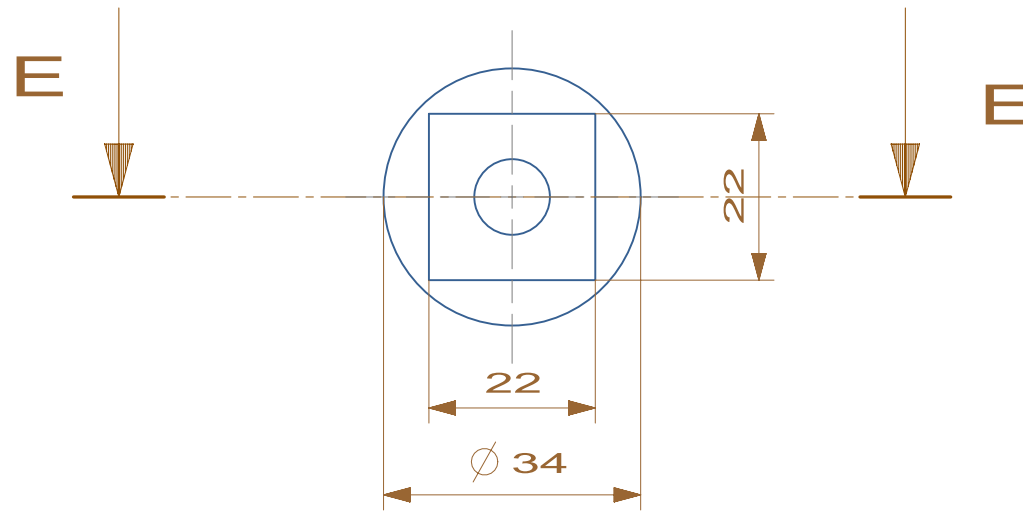
① 1 unidad - CuBe



SECTION C-C

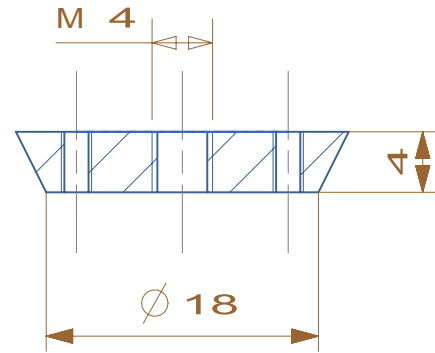


21 unidad - CuBe

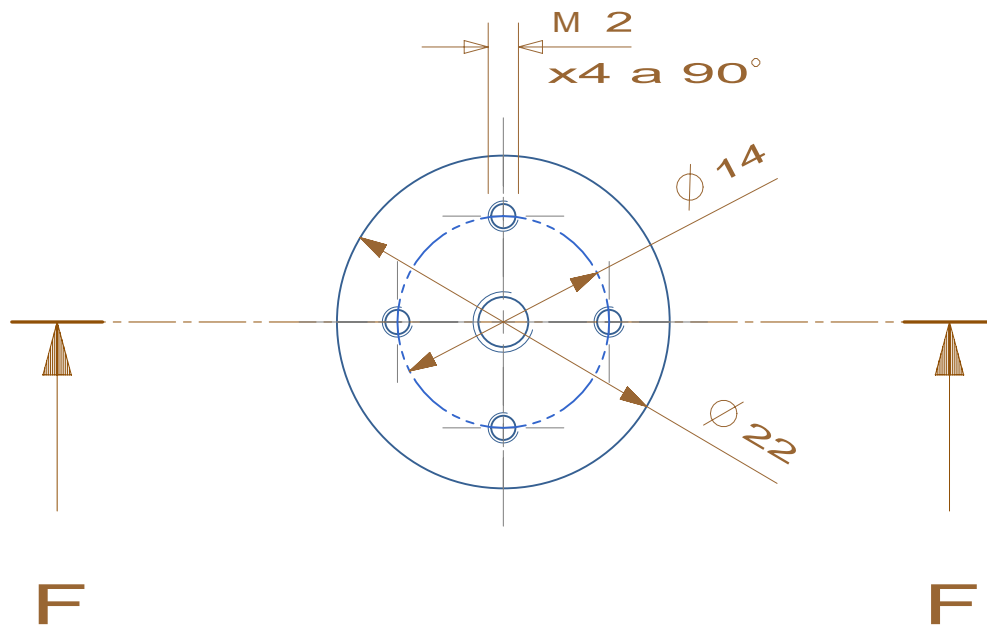


SECTION E-E

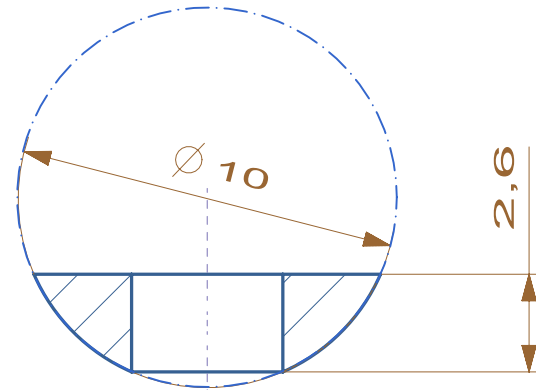
3 1 unidad - CuBe



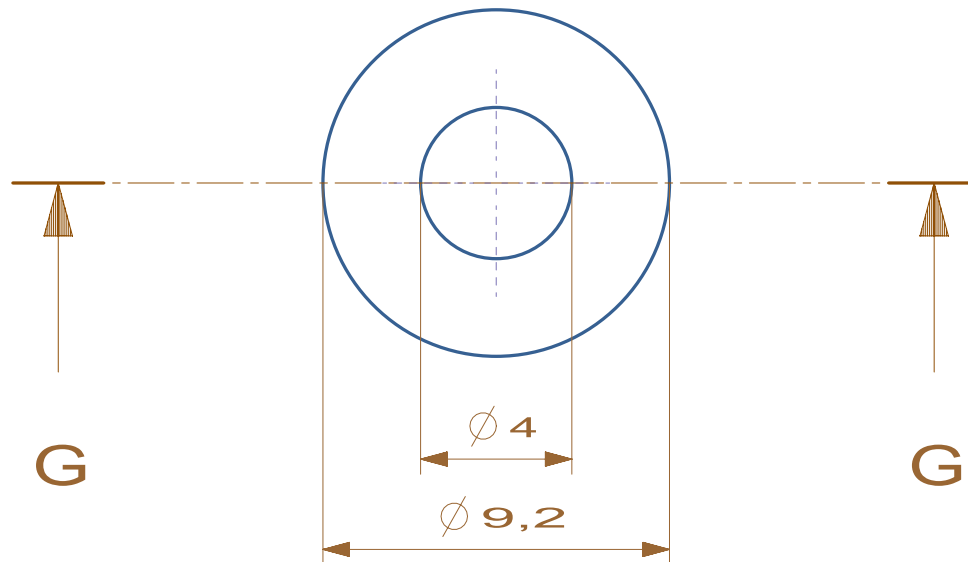
SECTION F-F



4 1 unidad - CuBe

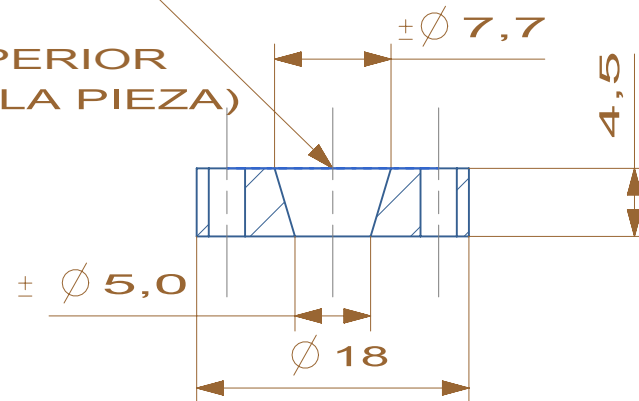


SECTION G-G



51 unidad - CuBe

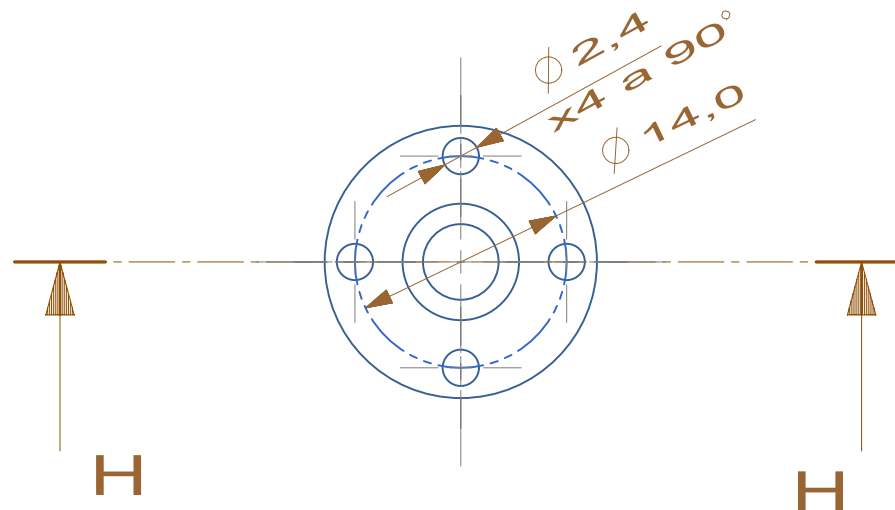
AJUSTAR CONO DE ZAFIRO
 \varnothing sup.8, \varnothing inf.5, H 5
(OFICINA TECNICA)
(LA PARTE DE DIAM.SUPERIOR
SOBRESALE 0.5mm DE LA PIEZA)



SECTION H-H

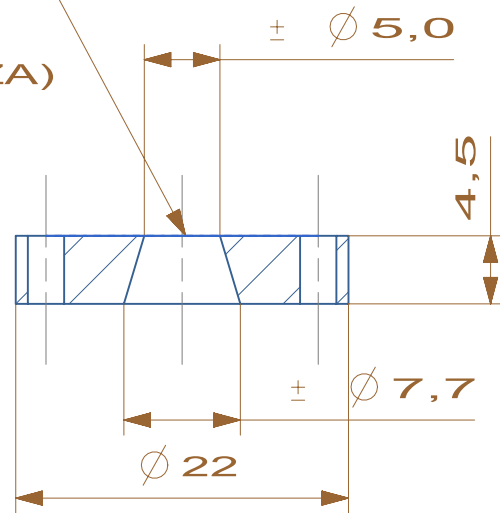
6 1 unidad -

PLASTICO APORTADO
POR EL CLIENTE



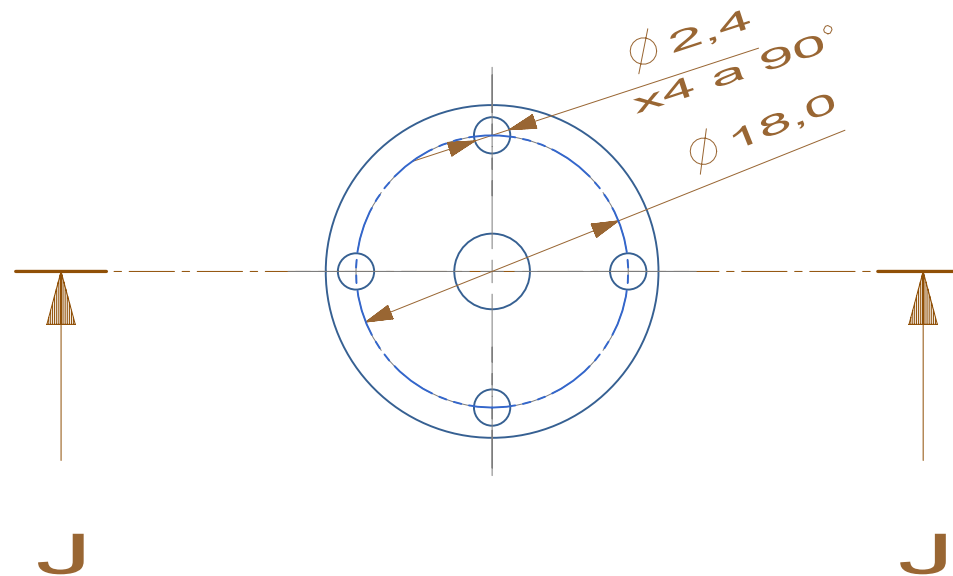
AJUSTAR EL CONO DE ZAFIRO
 \varnothing Sup 8, \varnothing Inf 5, H 5
EN OFICINA TECNICA
(LA PARTE DIAM.SUPERIOR
SOBRESALE 0.5mm DE LA PIEZA)

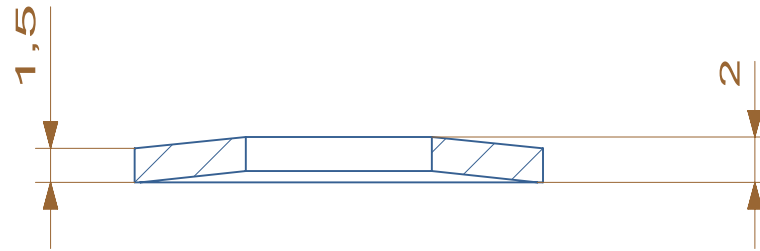
SECTION J-J



7 1 unidad

PLASTICO APORTADO
POR EL CLIENTE





SECTION K-K

